



Intersection Weave Assembly Instructions

(For Full Knock-Down, and Partially Assembled
Partially Knock-Down Shipments)

Intersection Weave Mounting Instructions for Knock Down Shipping

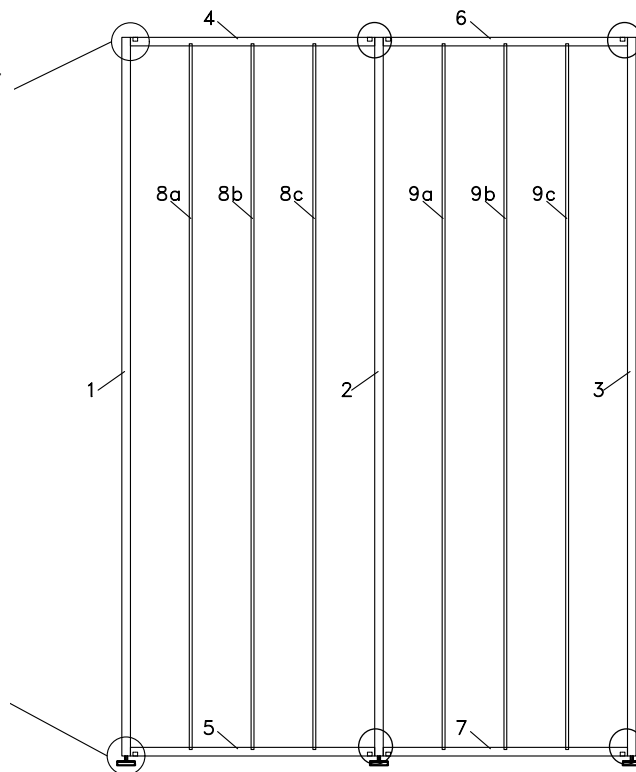
PARTS:

1. Vertical Posts – Labeled 1, 2, 3 in Weave Assembly Diagram
2. Horizontal Rails – Labeled 4, 5, 6, 7 in Weave Assembly Diagram. (Interchangeable between top & bottom, (2) Counterbore Holes at Edges Face Outward, (3) Interior Milled Holes Face Inward)
3. Vertical Rods – Labeled 8a, 8b, 8c, 9a, 9b, 9c in Weave Assembly Diagram
(3 Matching for Each Panel. Orientation Must be Matched Between 3 Based on Slat Size)
4. Wood Slats (Bundled Together for Each Panel, Shown on Shop Drawings)
Faces up toward ceiling
5. C-Channel (Mounted to Ceiling to Secure Assemble Panels) Faces down toward floor
6. Glides (Threaded into Bottom of Vertical Posts) Faces up toward ceiling
7. Anchor Fasteners (4 per Panel to Attach Vertical Posts and Horizontal Rails)
Faces down toward floor.
8. Extra Wood Slats in Case of Damage During Transit/Install

Weave Diagram

See attached
"Anchor Fastener
Assembly"
Instructions

The bottoms of
the verticals are
tapped for the
floor guides



The rods have
slots cut for the
wood slats to
register into.
The layout and
orientation are
specific to the
panel.

(see drawing to
determine layout)



Intersection Weave Mounting Instructions for Knock Down Shipping

INSTRUCTIONS:

- Layout Entire Elevation From Left to Right. (Vertical Post, Horizontal Top/Bottom, Vertical Rods, Next Vertical Post, etc). See Weave Assembly Diagram
- Begin with Left Vertical Post and Attach Bottom Horizontal Using the Anchor Fastener. Make Sure the Attachment is on the Bottom side of the Panel. See Anchor Fastener Assembly.
- Insert Vertical Rods into the Interior Milled Holes on the Horizontal. Make Sure ALL Milled Slots Match Across All (3) Rods and Confirm the Thickness Aligns with the Slats Called Out in the Elevation Drawings. Rods A and C will Face the Same Direction, Rod B will Face the Opposite.
- Repeat this Step with the Top Horizontal.
- Slide Wood Slats In According to the Elevation Drawings.
Note – The Rods have Slots to Register Wood Slats.
- Attach Right Vertical to Top and Bottom Horizontals, Using the Same Anchor Fasteners.
Note – Make Sure the Wood Slats are All Fit into the Slot Prior to Tightening Down.
- Cut and Fit the Acousticor Filler Strips into the Slots Between Each Wood Slat and Each Vertical Rod.
- Thread Glides into the Threaded Holes on the Bottom of Each Vertical Post. Hand Tighten All the Way In.
- Install C-Channel to the Ceiling Where the Panel(s) Will be Installed.
- Tilt Panel(s) Up and into the C-Channel.
- Run the Glides Out as Needed to Secure the Panel(s) Between the Floor and C-Channel.
- Inspect to Confirm Wood Slats did not Shift During Install and are in the Correct Place.
- Wipe Down and Repeat for Remaining Elevations.
- Repeat These Steps for Each Panel/Elevation.

For Partially Assembled Shipments:

Note #1 – When possible shipment will have the first panel of each elevation assembled. Refer to above for Knock-Down instructions for all other sections.

Note #2 – Follow the diagram for the slats as shown in the drawings as they vary from section to section.



Anchor Fastener Assembly



STEP 1:

Anchor Fasteners ship assembled. Slightly loosen the nut and bolt.



STEP 2:

Place anchor fastener into the counterbore hole. Position the off-set hole oriented toward the top of the fastener.



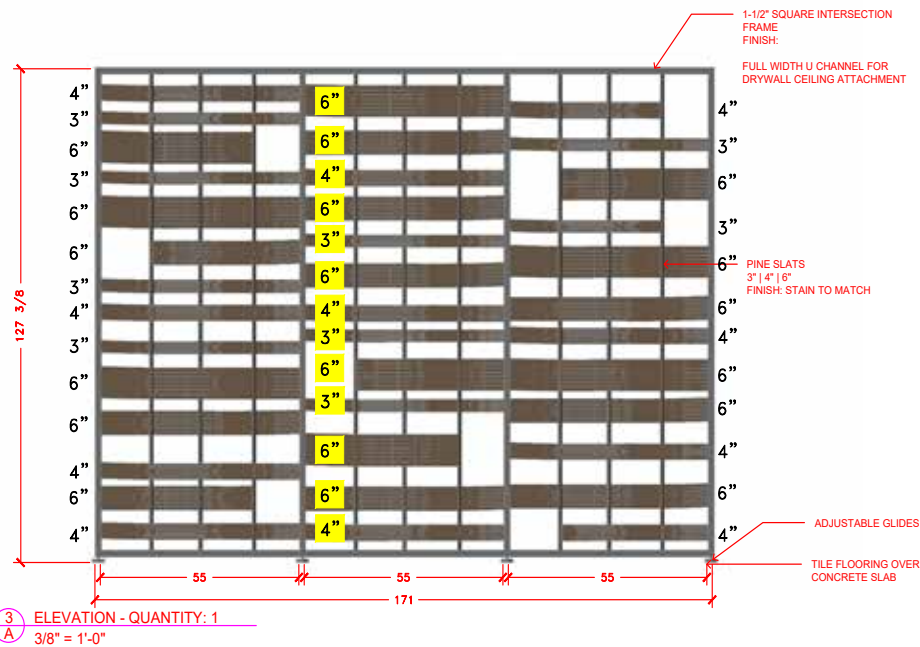
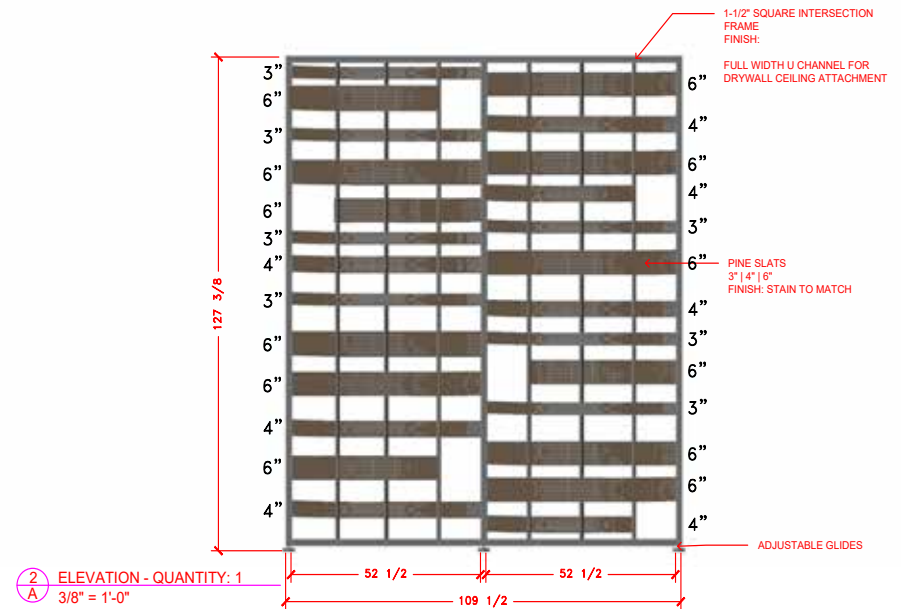
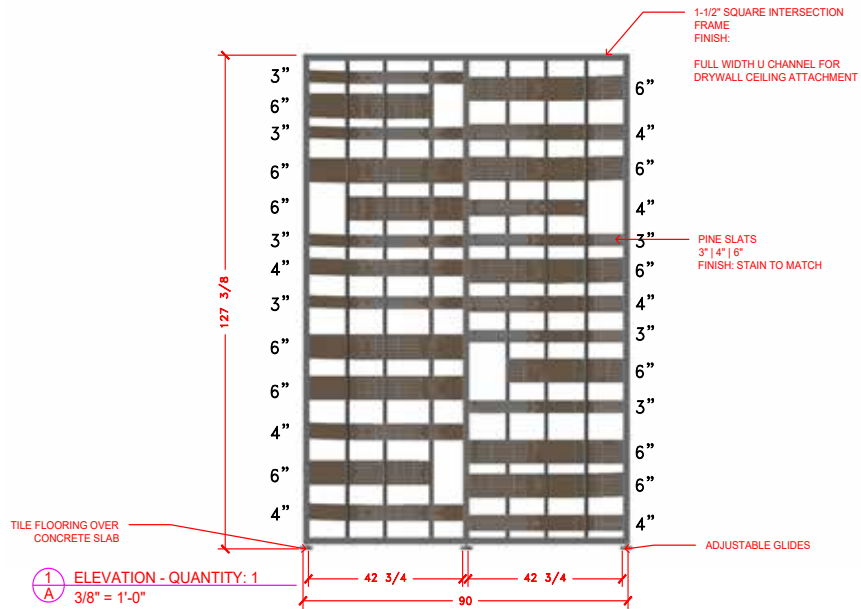
STEP 3:

While holding the anchor fastener in the counterbore hole, slide the mating profile into place.



STEP 3:

Square and align the mating profile. Tighten the anchor fastener until the profiles are secure.



<p>3650 Messer Airport Hwy Birmingham, AL 35222 p 205.941.1942 f 205.941.1781</p>	PROJ. NAME: 	<input type="checkbox"/> APPROVED AS NOTED <input type="checkbox"/> REVISE & RESUBMIT <input type="checkbox"/> MAKE CORRECTIONS NOTED <input type="checkbox"/> REJECTED
	DWG # PROP # 	APPROVED BY:
	SCALE : 3/8" = 1'-0" 	DATE:
	<p>This shop drawing is for general conformance with plans and specifications only, and does not relieve the fabricator of the responsibility of compliance with requirements of the drawings and specifications.</p>	